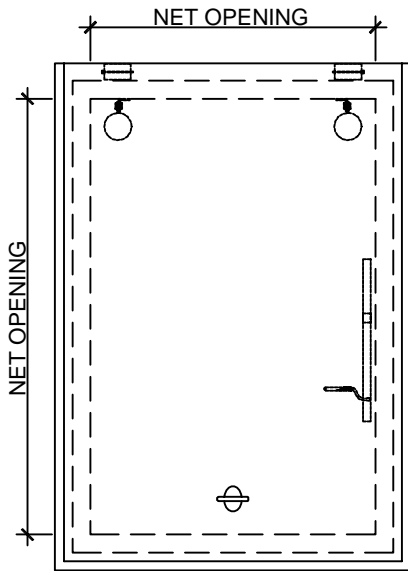
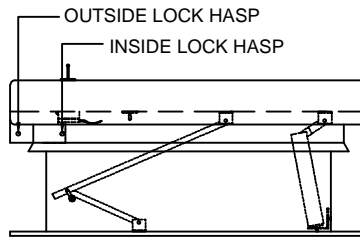
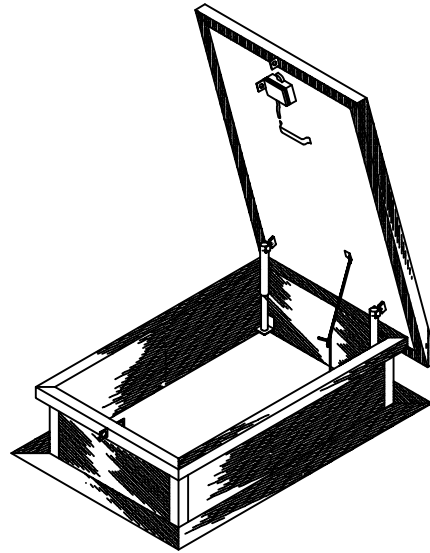


# MODEL - RHG



## PLAN VIEW

NOT TO SCALE

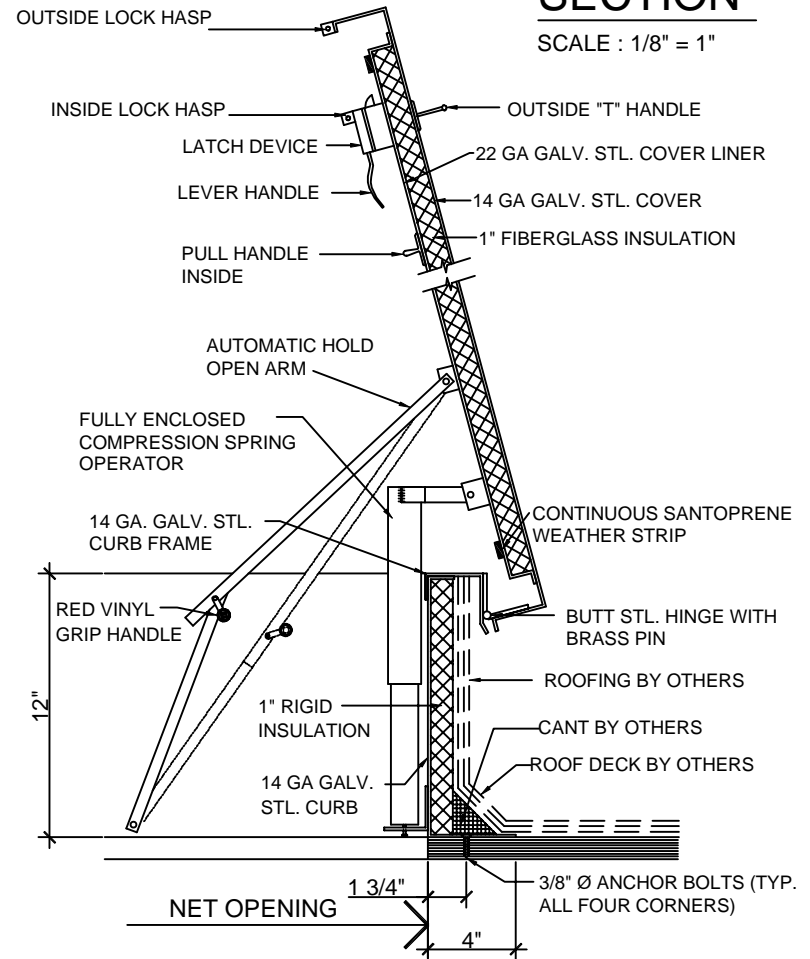


## SIDE VIEW

NOT TO SCALE

## SECTION

SCALE : 1/8" = 1"



MODEL : RHG-  
 NET OPENING :  
 UNITS REQUIRED :  
 FINISH :

### SPECIFICATIONS :

ALL PARTS SHALL BE NEATLY FORMED AND FABRICATED WITH ALL JOINTS AND SEAMS COMPLETELY WELDED TO INSURE WATER TIGHTNESS . COVER, COVER LINER, CURB AND CURB FRAME TO BE FORMED FROM GALVANIZED STEEL AND SUPPLIED WITH A GREY METAL PRIMER FINISH. UNIT SHALL BE SUPPLIED COMPLETELY ASSEMBLED AND READY FOR INSTALLATION. UNIT WILL OPEN TO MAXIMUM 75° POSITION. ACTUAL NUMBER OF SPRING OPERATORS TO BE DETERMINED AS NEEDED FOR SMOOTH OPERATION OF UNIT.

*Lane-Aire* MANUFACTURING CORP.

2820 El Presidio Street, Carson, California 90749  
 (323) 636-2324 - FAX (310) 604-3395

JOB	SHEET
ARCH.	OF
CONTR.	DWG. NO.
SUB. CONTR.	RHG
DRAWN BY AC-	DATE: